

COME TO LIFE®



# The Caldera Difference.

Our reliable, high-performance spas are designed for comfort, efficient energy use, and simple maintenance so you can enjoy the full wellness benefits that come from a daily soak.

## COMFORT

Deep, cradling seats and a textured FootRidge® help you stay relaxed and seated even when enjoying powerful jets. Perfectly positioned hydrotherapy jets melt your tension away.

## DESIGN

Every contour a choice. Every innovation, crafted to help you transform. Every decision, made to please. The result? A personal retreat, where you can rejuvenate and transform your body and mind.

## PERFORMANCE

Nothing should stand between you and your daily soak. Our materials are selected based on their ability to stand up to everyday use, so your hot tub is ready whenever you are.



# LIQUID JUST GOT SMARTER.

freshwater<sup>®</sup> IQ

FreshWater<sup>®</sup> IQ is an in-line, self-monitoring salt system that tells you what it needs to maintain clean, natural-feeling water, with less time and effort from you. Because we believe your hot tub should take care of you, not the other way around.

## SMARTER

Our patented smart monitoring technology automatically tests your water every hour and provides clear recommendations when adjustments are needed.

## CLEANER

FreshWater IQ uses the FreshWater Salt System to gently clean the water without any harsh odors or chemicals.

## SIMPLER

Easy-to-follow on-screen recommendations tell you what to do to maintain clean, natural-feeling water with less guesswork on your part.

## BETTER

Fully integrated and easy-to-use, FreshWater IQ is the most comprehensive water care system available.



<sup>1</sup>Available on all Utopia<sup>®</sup> and Paradise<sup>®</sup> Series spas.

<sup>2</sup>Factors such as bather load and water chemistry can impact water life. When the spa is properly maintained, a three-pack of cartridges with the FreshWater Salt System will keep water clean and fresh for up to a full year.

## Hot Tub Essentials.



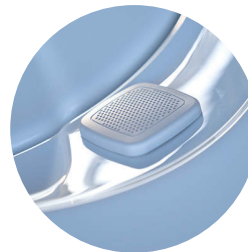
Steps



Covers and Lifters



Water Care



Entertainment Systems



CoolZone<sup>®</sup> Cooling System

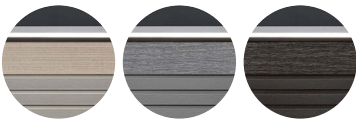


# Utopia<sup>®</sup> Series.



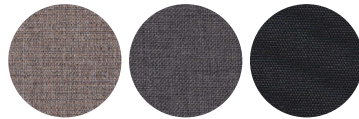
	CANTABRIA <sup>®</sup>	GENEVA <sup>®</sup>	NIAGARA <sup>®</sup>	TAHITIAN <sup>®</sup>	FLORENCE <sup>®</sup>	RAVELLO <sup>™</sup>
<b>Size</b>	9' x 7'7" x 38"	7'5" x 7'5" x 38"	7'5" x 7'5" x 38"	7' x 7' x 36"	7' x 7' x 36"	7' x 5'6" x 33"
<b>Seats</b>	8 Adults	6 Adults	7 Adults	6 Adults	6 Adults	3 Adults
<b>Jets</b>	74	55	52	48	46	39

## CABINETS



PARCHMENT WITH ASPEN    ASH WITH MEDIUM OAK    JAVA WITH DARK OAK

## COVERS



STORM Pairs with Parchment    CHESTNUT Pairs with Ash    BLACK Pairs with Java

## SHELLS



ARCTIC WHITE    WHITE PEARL    TUSCAN SUN    MIDNIGHT CANYON    PLATINUM\*

## EXCLUSIVE COMBINATION OF HIGH-PERFORMANCE DETAILS & TRANSFORMATIONAL DESIGN

- Total body restoration with up to 8 Hot Tub Circuit Therapy<sup>®</sup> stations in each spa
- Specialized jets including UltraMasseuse<sup>®</sup> system, OrbiSage<sup>®</sup> rotating jets and the Atlas<sup>®</sup> Neck Massage system
- Easy to care for with the FreshWater<sup>®</sup> IQ System which is included on all Utopia Series models
- Insulating base pan for extra protection and efficiency
- Patented FiberCor<sup>®</sup> technology for unbeatable energy efficiency
- Remarkable power and efficiency
- Enhanced lighting
- Sleek stainless-steel trim with an integrated front panel LED light bar
- Touchscreen control panel
- Auxiliary control panel
- EcoTech<sup>®</sup> Plus cabinet offers a modern design with all-weather strength and durability
- Diagnostic logo light
- We offer matching steps designed to complete your spa. Available in Java, Ash and Parchment.

 FRESHWATER<sup>®</sup> IQ SYSTEM INCLUDED

\*Platinum is not available with the Parchment cabinet.

# Paradise<sup>®</sup> Series.



	MAKENA <sup>®</sup>	SALINA <sup>®</sup>	REUNION <sup>®</sup>	SEYCHELLES <sup>®</sup>	MARTINIQUE <sup>®</sup>	KAUAI <sup>®</sup>
<b>Size</b>	7'5" x 7'5" x 36"	7'5" x 7'5" x 36"	7' x 7' x 36"	7' x 7' x 36"	7'5" x 6'4" x 34"	7' x 5'5" x 29.5"
<b>Seats</b>	6 Adults	7 Adults	7 Adults	6 Adults	5 Adults	3 Adults
<b>Jets</b>	46	40	38	43	34	31

## CABINETS

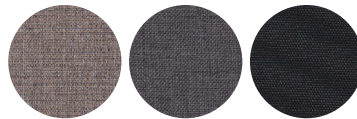


PARCHMENT

ASH

JAVA

## COVERS



STORM  
Pairs with  
Parchment

CHESTNUT  
Pairs with  
Ash

BLACK  
Pairs with  
Java

## SHELLS



ARCTIC  
WHITE

WHITE  
PEARL

DESERT

TUSCAN  
SUN

MIDNIGHT  
CANYON

## UNIQUE BLEND OF PREMIUM OPTIONS & FUNCTIONS FOR COMPLETE RESTORATIVE RELAXATION

- Hot Tub Circuit Therapy<sup>®</sup> to maximize relief of tired muscles
- Easy to care for with the FreshWater<sup>®</sup> IQ System which is an available option on all Paradise Series models
- Conveniently placed diverter valves to adjust and direct jet pressure to the seats of your choice
- Durable EcoTech<sup>®</sup> cabinetry
- Energy-efficient FiberCor<sup>®</sup> insulation
- Illuminated Aquarella<sup>®</sup> waterfall
- We offer matching steps designed to complete your spa. Available in Java, Ash and Parchment.

# Vacanza® Series.



	PALATINO®	MARINO®	VANTO®	TARINO™	CELIO®	AVENTINE®
<b>Size</b>	7'5" x 7'5" x 38.5"	7' x 7' x 36"	7' x 7' x 36"	6'10" x 6'10" x 33"	7' x 5'5" x 29"	5'4" x 5'4" x 29"
<b>Seats</b>	6 Adults	6 Adults	7 Adults	5 Adults	3 Adults	2 Adults
<b>Jets</b>	45	35	35	23	18	14

## CABINETS

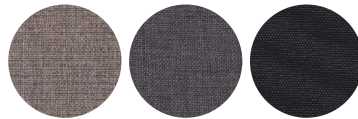


PARCHMENT

ASH

JAVA

## COVERS



STORM  
Pairs with  
Parchment

CHESTNUT  
Pairs with  
Ash

BLACK  
Pairs with  
Java

## SHELLS



ARCTIC  
WHITE\*

WHITE  
PEARL

DESERT\*

TUSCAN  
SUN

MIDNIGHT  
CANYON

## THOUGHTFULLY DESIGNED TO DELIVER DAILY RENEWAL AT A GREAT VALUE

- Integrated FROG® in-line water care
- Energy-efficient FiberCor® insulation
- Durable, low-maintenance EcoTech® cabinet
- 115v / 20 amp plug-in (Tarino, Celio and Aventine models)
- We offer matching steps designed to complete your spa. Available in Java, Ash and Parchment.